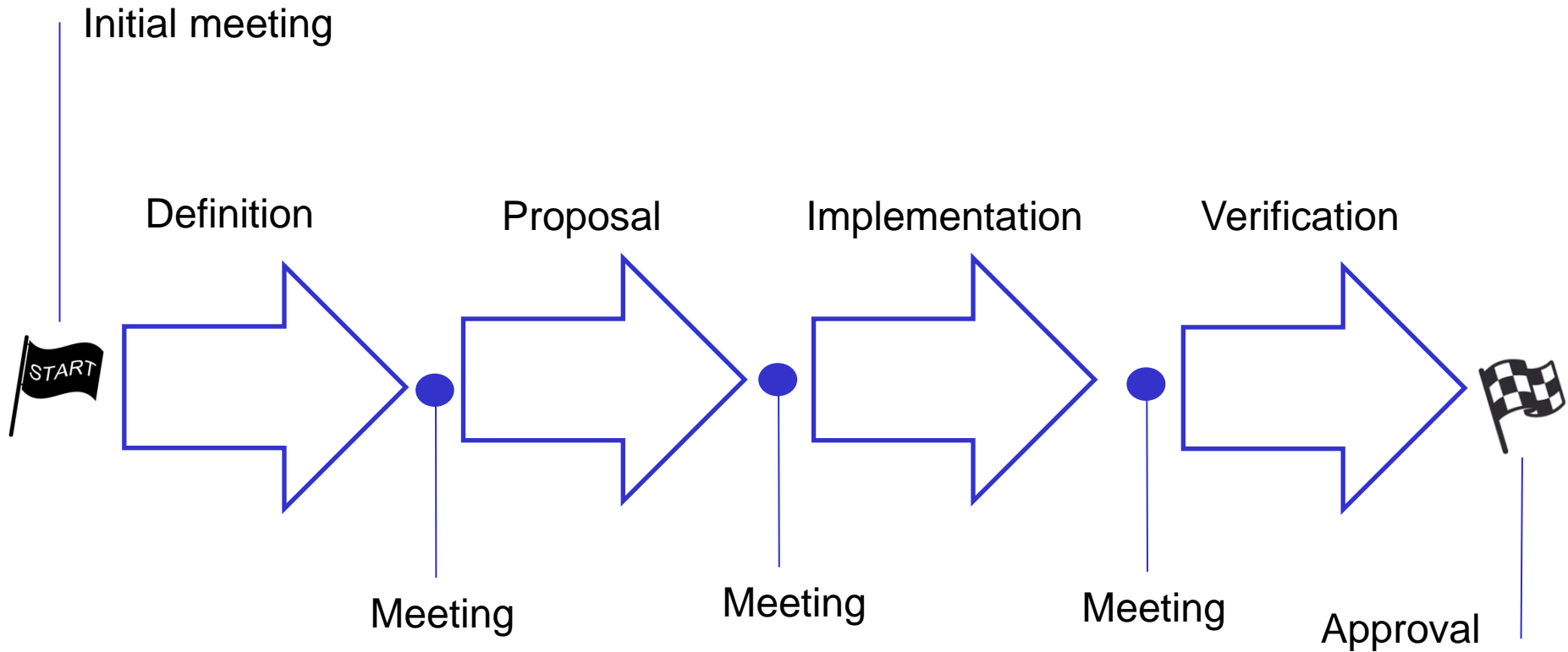




Label Manager

MEDUSA

- IT's all about service




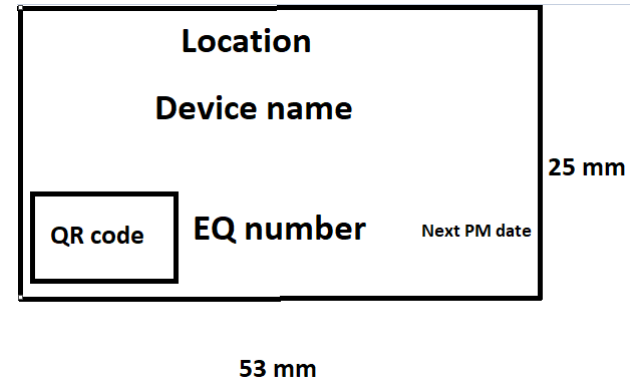
MEDUSA

- IT's all about service



Definition

- Which printers to be used
 - Printer name on the network
 - Location
 - Makes and models
 - New printers or already installed?
- Contact person at IT
 - Who at IT will be a part of the decision on the printer setup
 - Who at IT will perform printer installation
- Label design and content 
 - Design proposals in eg “paint”
 - Use “Bar code” or “QR code” ?



MEDUSA

- IT's all about service



Proposal

- SoftPro will create proposals based on the information from the Definition phase
 - Suggested architecture
 - Suggested label design
 - Action plan
 - Quotation



MEDUSA

- IT's all about service



Implementation

- The quote describes necessary activities and responsibilities
- Customers IT department will:
 - Install printers that are going to be used, which means installing all the necessary drivers for each printer on the server and make sure it's possible to print a test label.
- SoftPro will:
 - Design labels and install them in Medusa
 - Configure Medusa
 - Test the communication to the printer queue

MEDUSA

- IT's all about service



Verification

- The customer's responsibility is to validate by:
 - Printing labels from Medusa
 - Acceptance test
- Installation document from SoftPro will be handed over
- Implementation completed

MEDUSA

- IT's all about service